



DRILLING LOG



FROM :(mt) 100

TO :(mt) 3320

SCALE : 1/ 1000

Well Name : LONGTOM-3

Company : Nexus Energy

Country : AUSTRALIA

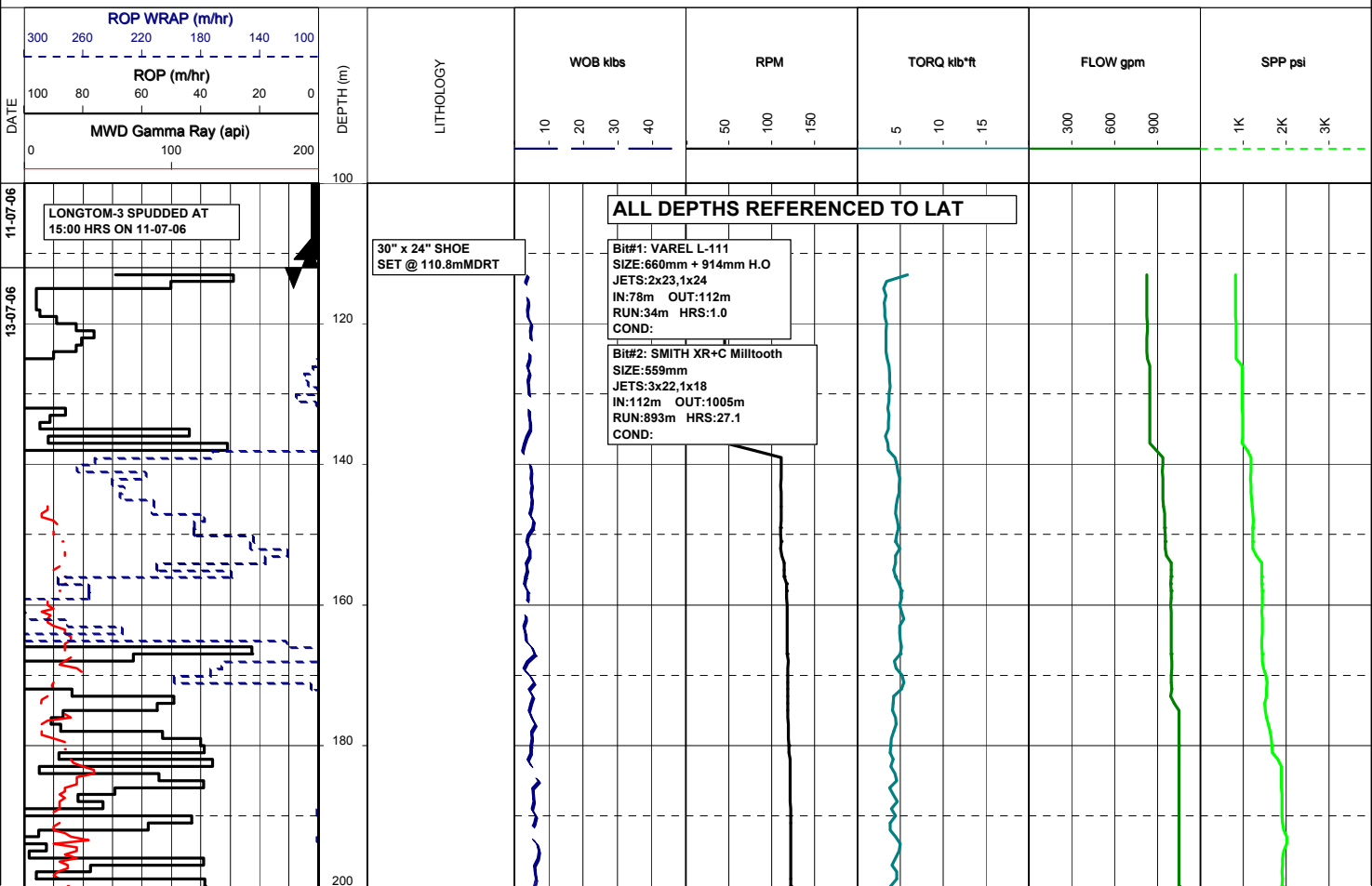
RT-MSL (m): 21.5

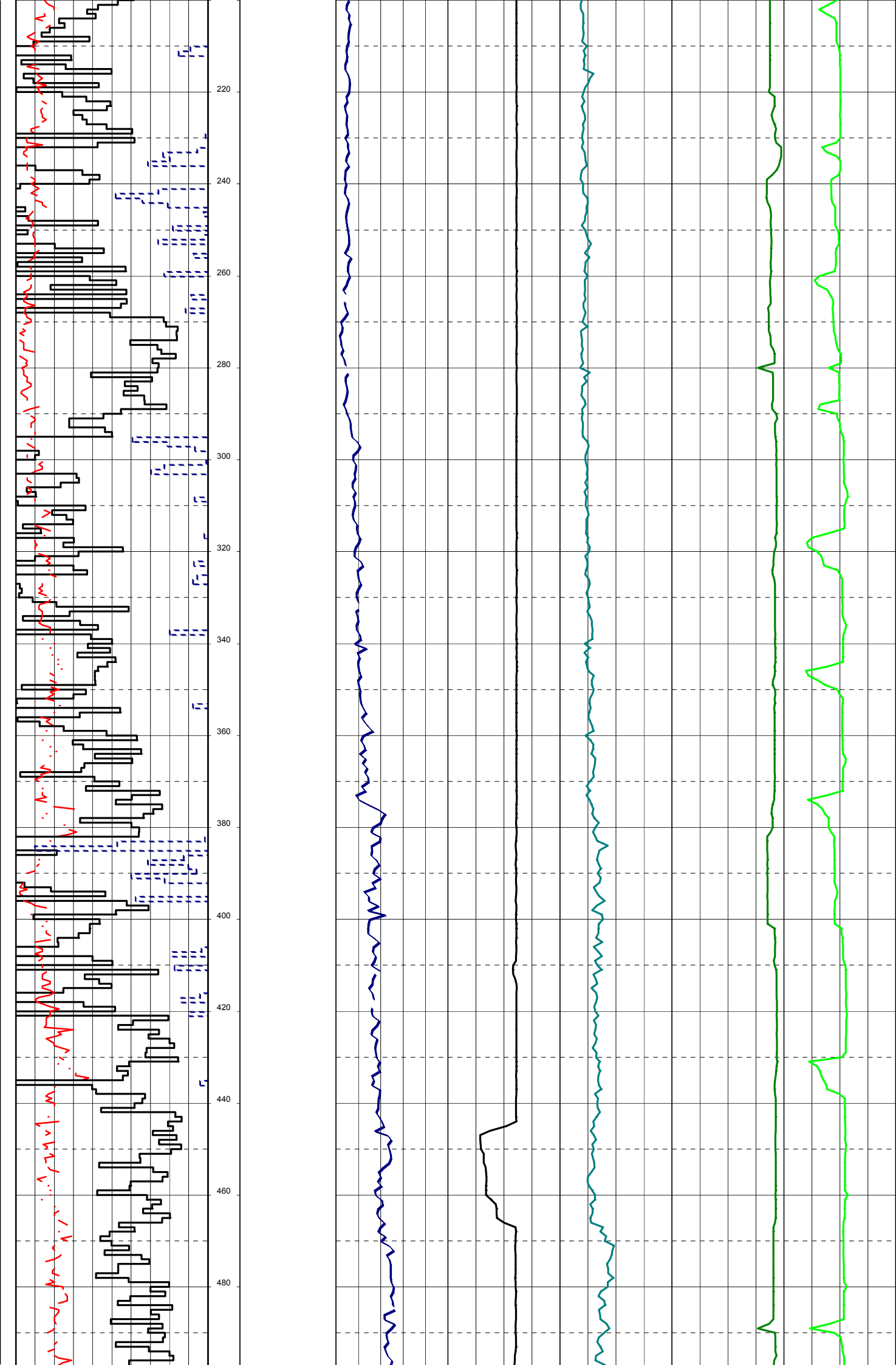
Final TD (mMDRT): m

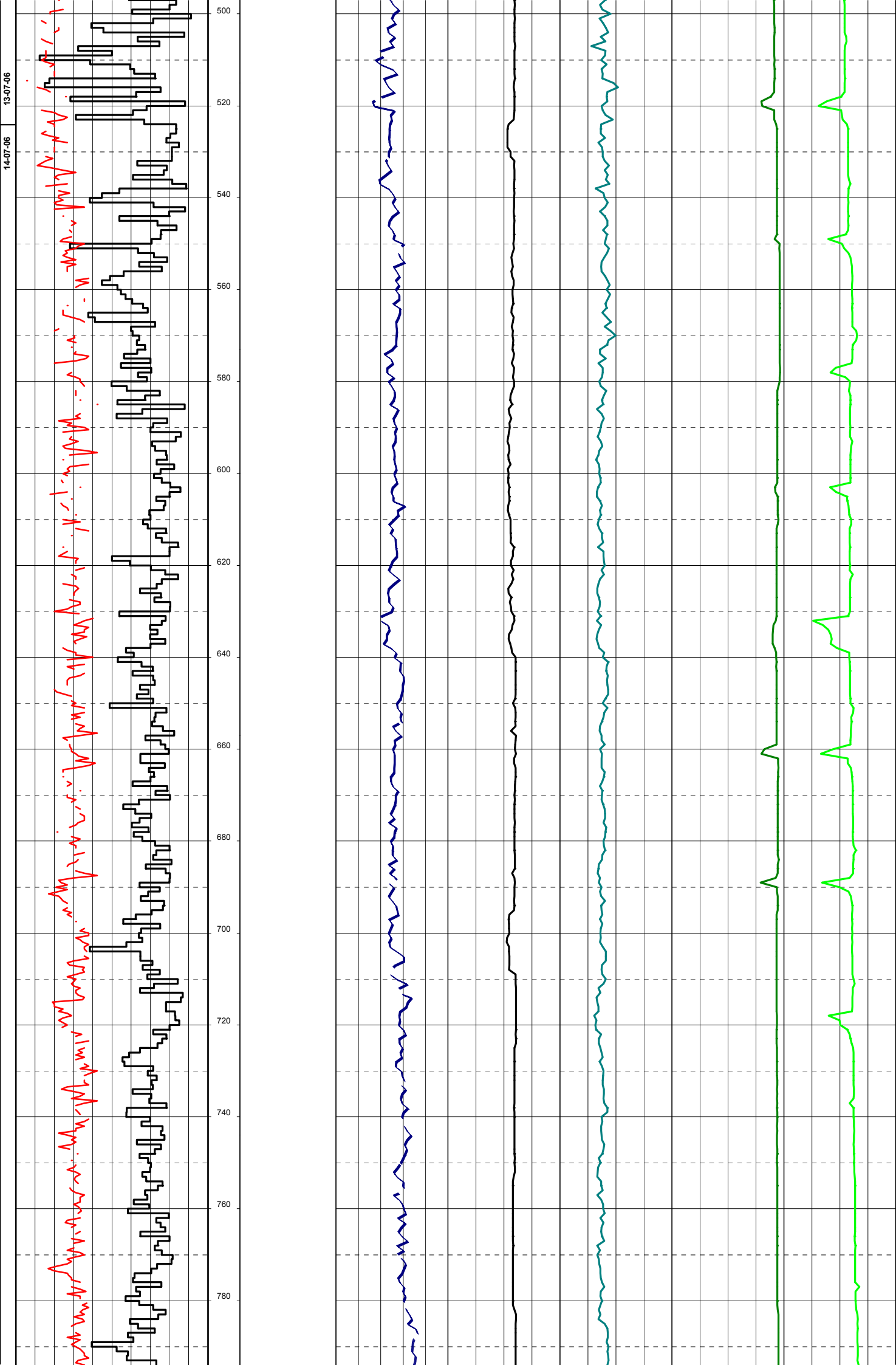
RT-SEABED (m): 78.2

Final TVD (m TVDSS): m

Generated by ALS Package

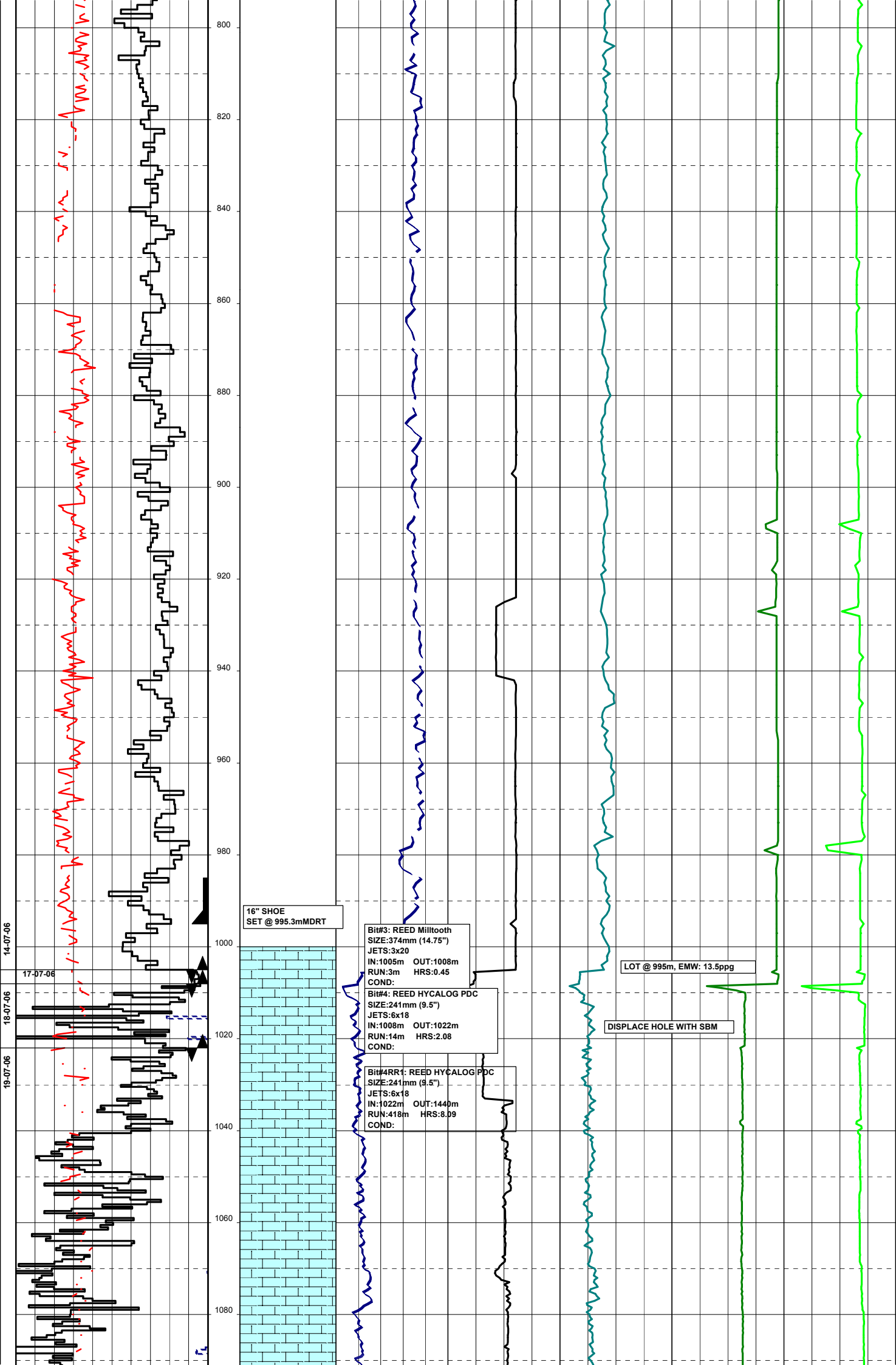






14-07-06

13-07-06



16" SHOE
SET @ 995.3mMDRT

Bit#3: REED Milltooth
SIZE:374mm (14.75")
JETS:3x20
IN:1005m OUT:1008m
RUN:3m HRS:0.45
COND:

Bit#4: REED HYCALOG PDC
SIZE:241mm (9.5")
JETS:6x18
IN:1008m OUT:1022m
RUN:14m HRS:2.08
COND:

Bit#4RR1: REED HYCALOG PDC
SIZE:241mm (9.5")
JETS:6x18
IN:1022m OUT:1440m
RUN:418m HRS:8.09
COND:

LOT @ 995m, EMW: 13.5ppg

DISPLACE HOLE WITH SBM

14-07-06

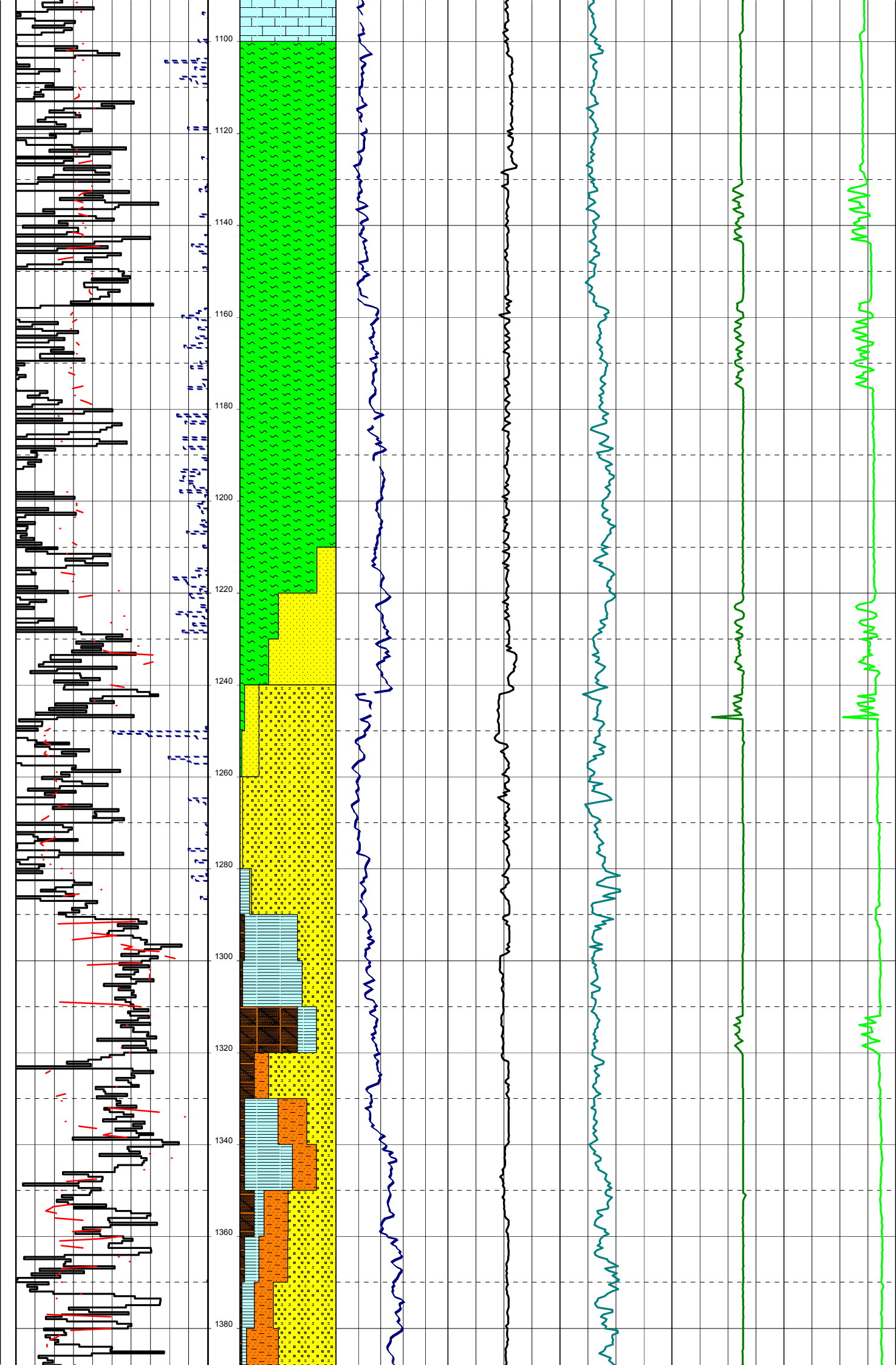
17-07-06

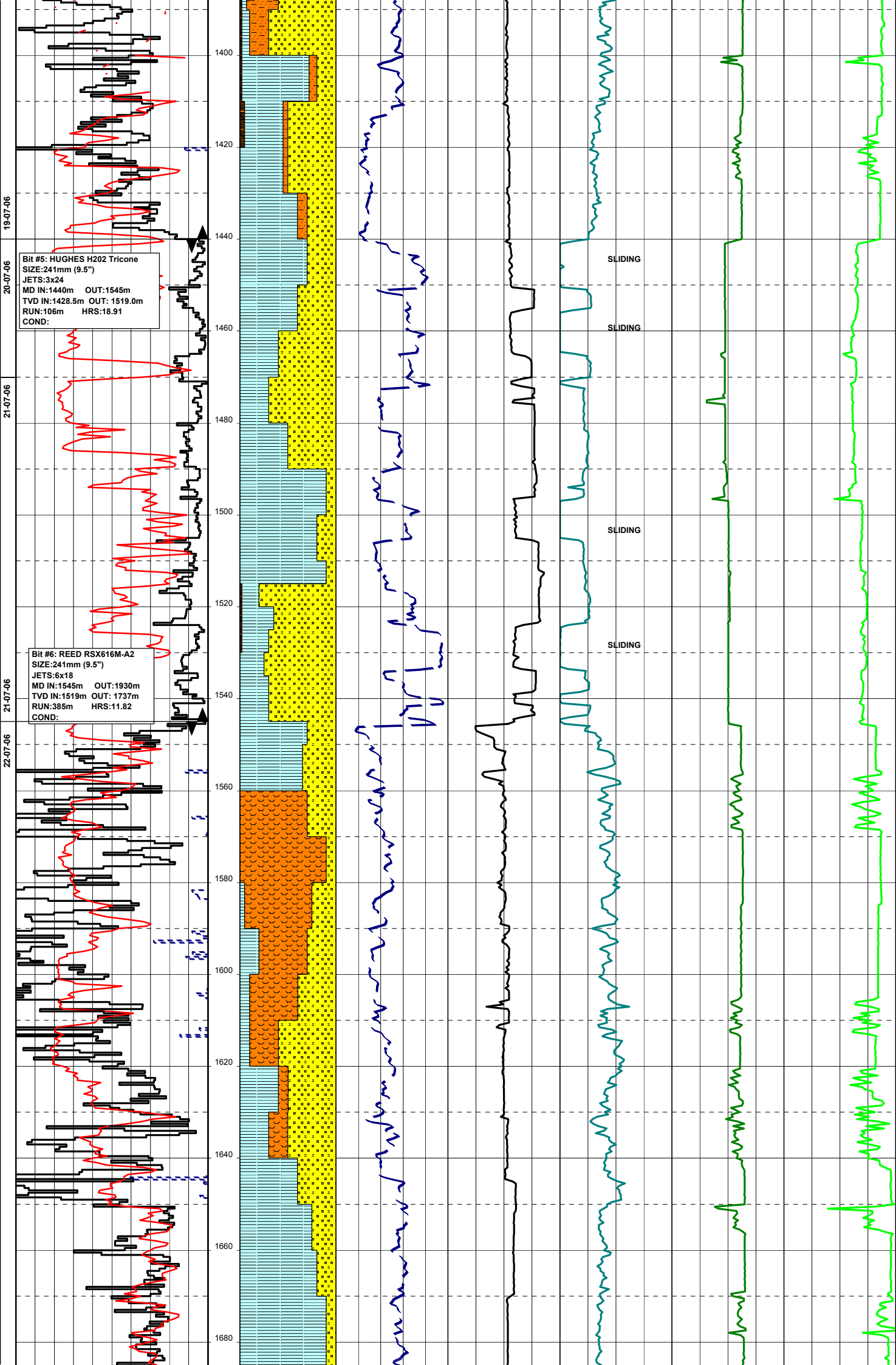
18-07-06

19-07-06

800
820
840
860
880
900
920
940
960
980
1000
1020
1040
1060
1080

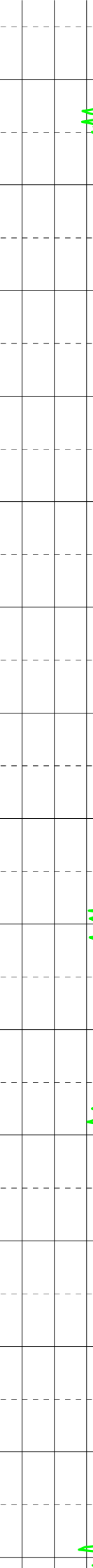
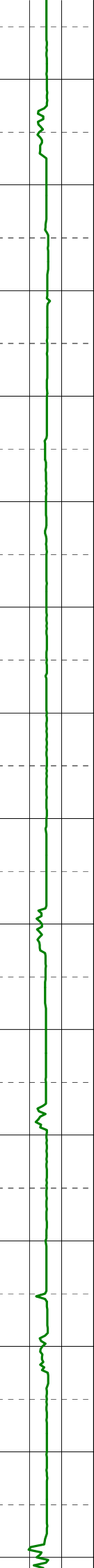
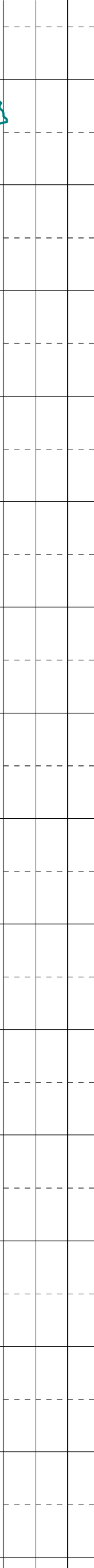
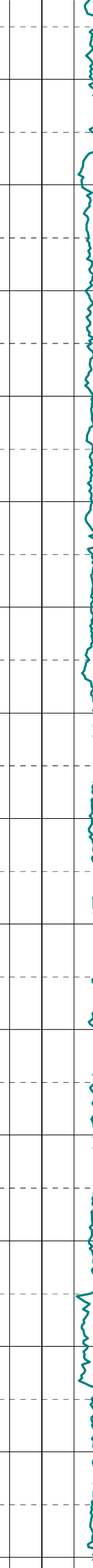
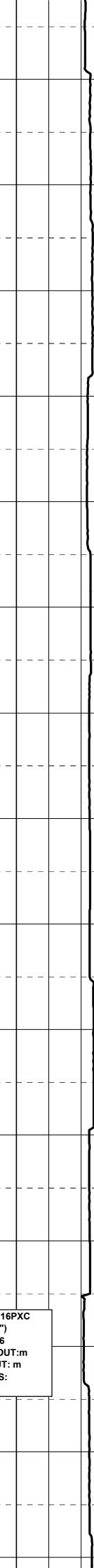
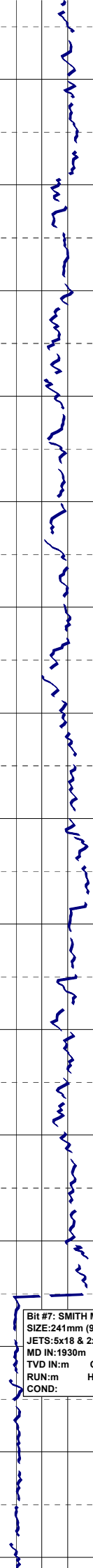
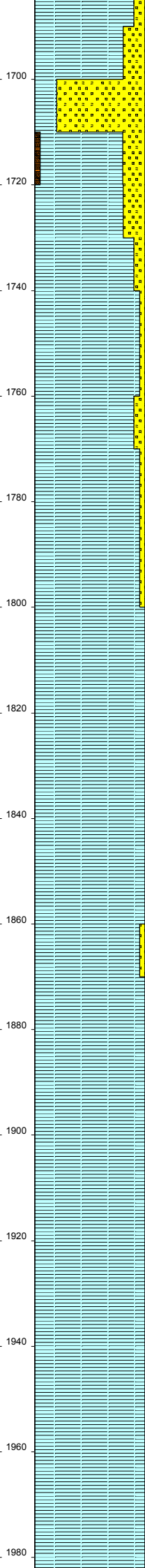
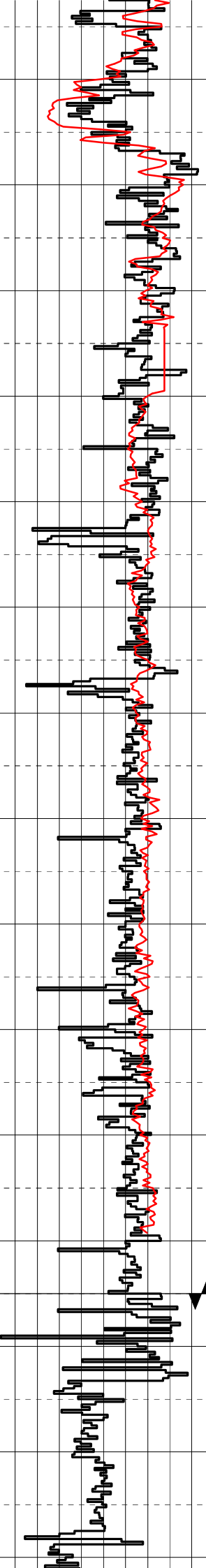
Handwritten red notes:
 1. ...
 2. ...
 3. ...
 4. ...
 5. ...
 6. ...
 7. ...
 8. ...
 9. ...
 10. ...
 11. ...
 12. ...
 13. ...
 14. ...
 15. ...
 16. ...
 17. ...
 18. ...
 19. ...
 20. ...
 21. ...
 22. ...
 23. ...
 24. ...
 25. ...
 26. ...
 27. ...
 28. ...
 29. ...
 30. ...
 31. ...
 32. ...
 33. ...
 34. ...
 35. ...
 36. ...
 37. ...
 38. ...
 39. ...
 40. ...
 41. ...
 42. ...
 43. ...
 44. ...
 45. ...
 46. ...
 47. ...
 48. ...
 49. ...
 50. ...
 51. ...
 52. ...
 53. ...
 54. ...
 55. ...
 56. ...
 57. ...
 58. ...
 59. ...
 60. ...
 61. ...
 62. ...
 63. ...
 64. ...
 65. ...
 66. ...
 67. ...
 68. ...
 69. ...
 70. ...
 71. ...
 72. ...
 73. ...
 74. ...
 75. ...
 76. ...
 77. ...
 78. ...
 79. ...
 80. ...
 81. ...
 82. ...
 83. ...
 84. ...
 85. ...
 86. ...
 87. ...
 88. ...
 89. ...
 90. ...
 91. ...
 92. ...
 93. ...
 94. ...
 95. ...
 96. ...
 97. ...
 98. ...
 99. ...
 100. ...



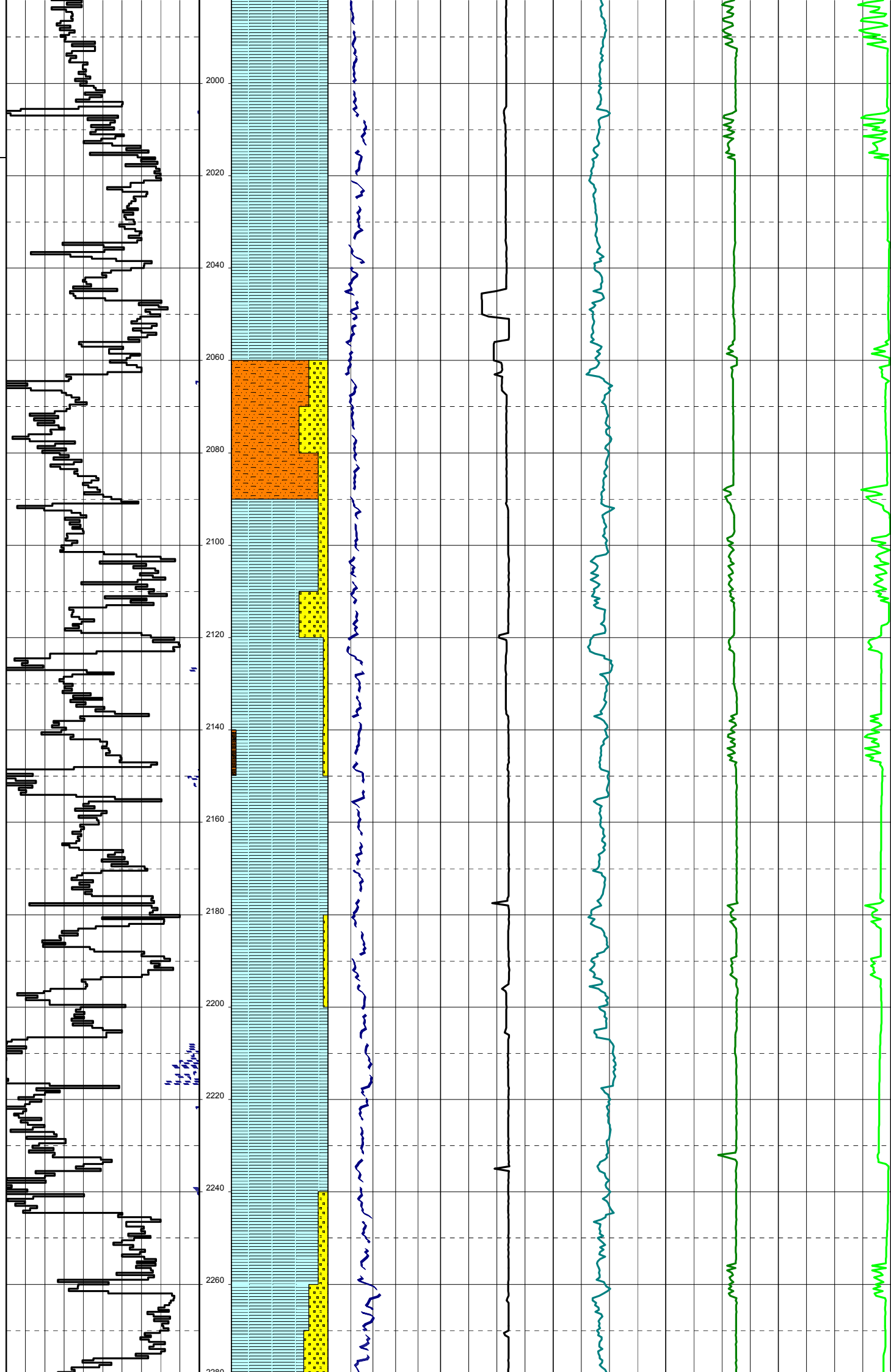


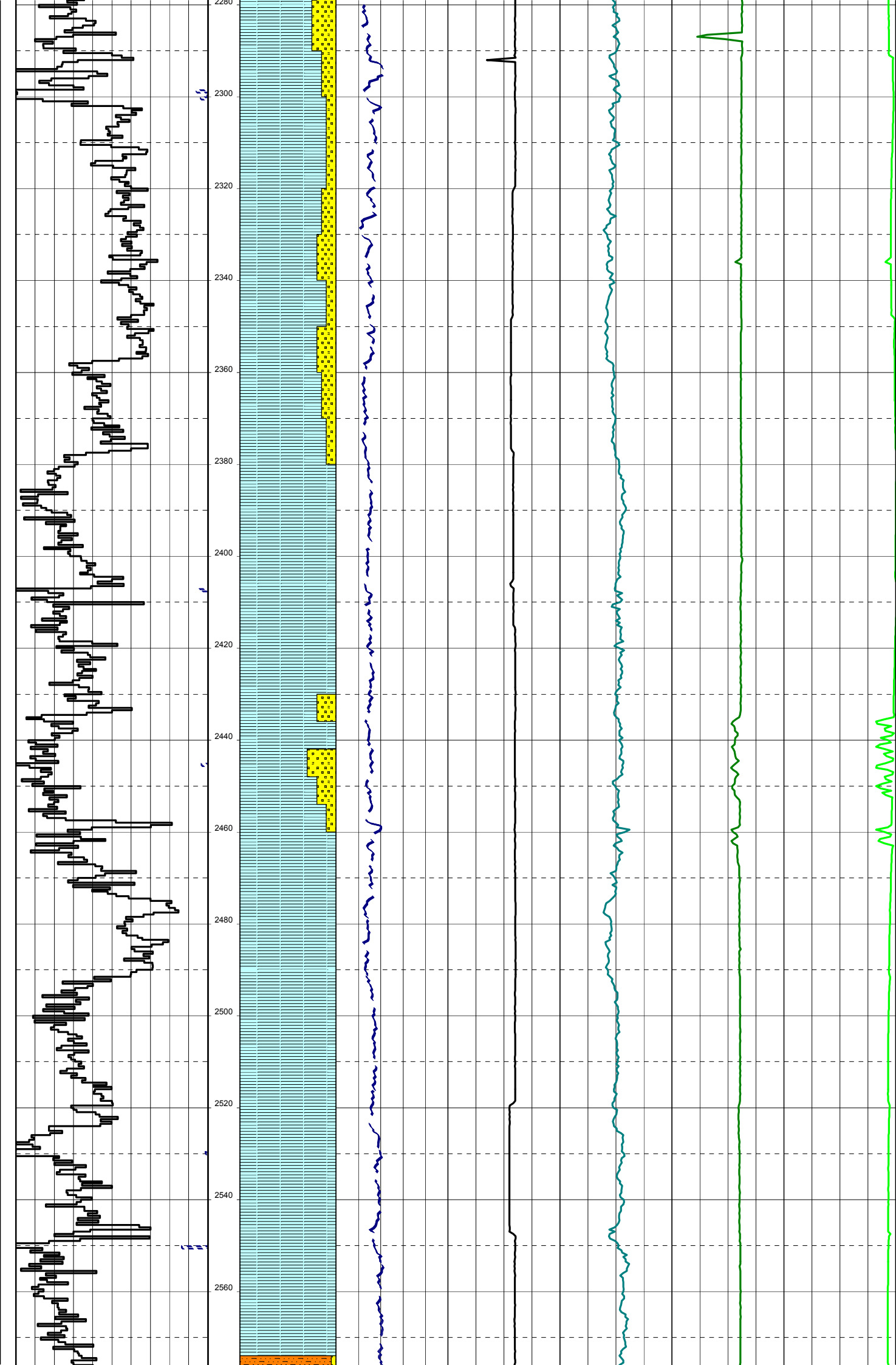
23-07-06 22-07-06

1700
1720
1740
1760
1780
1800
1820
1840
1860
1880
1900
1920
1940
1960
1980

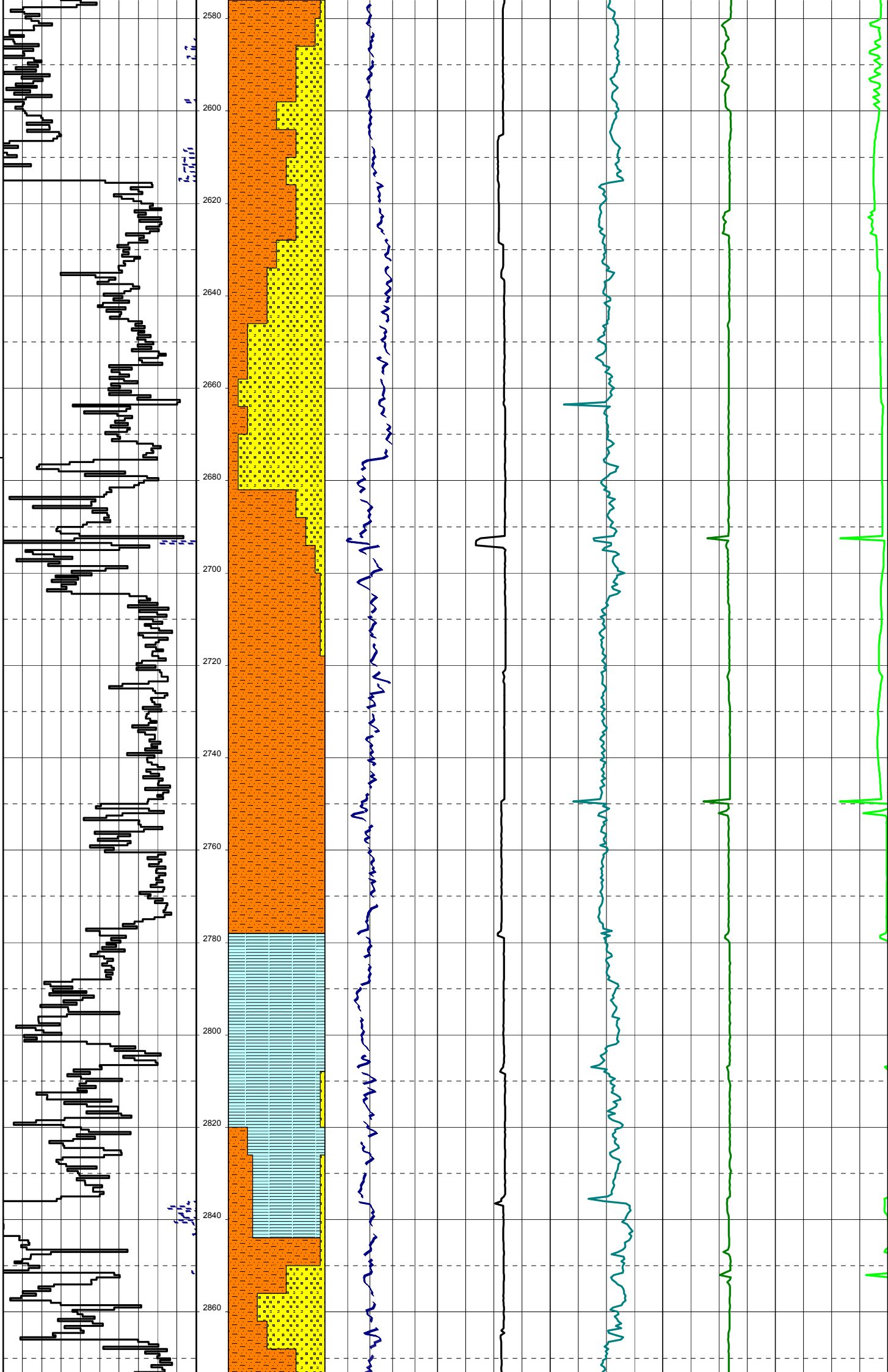


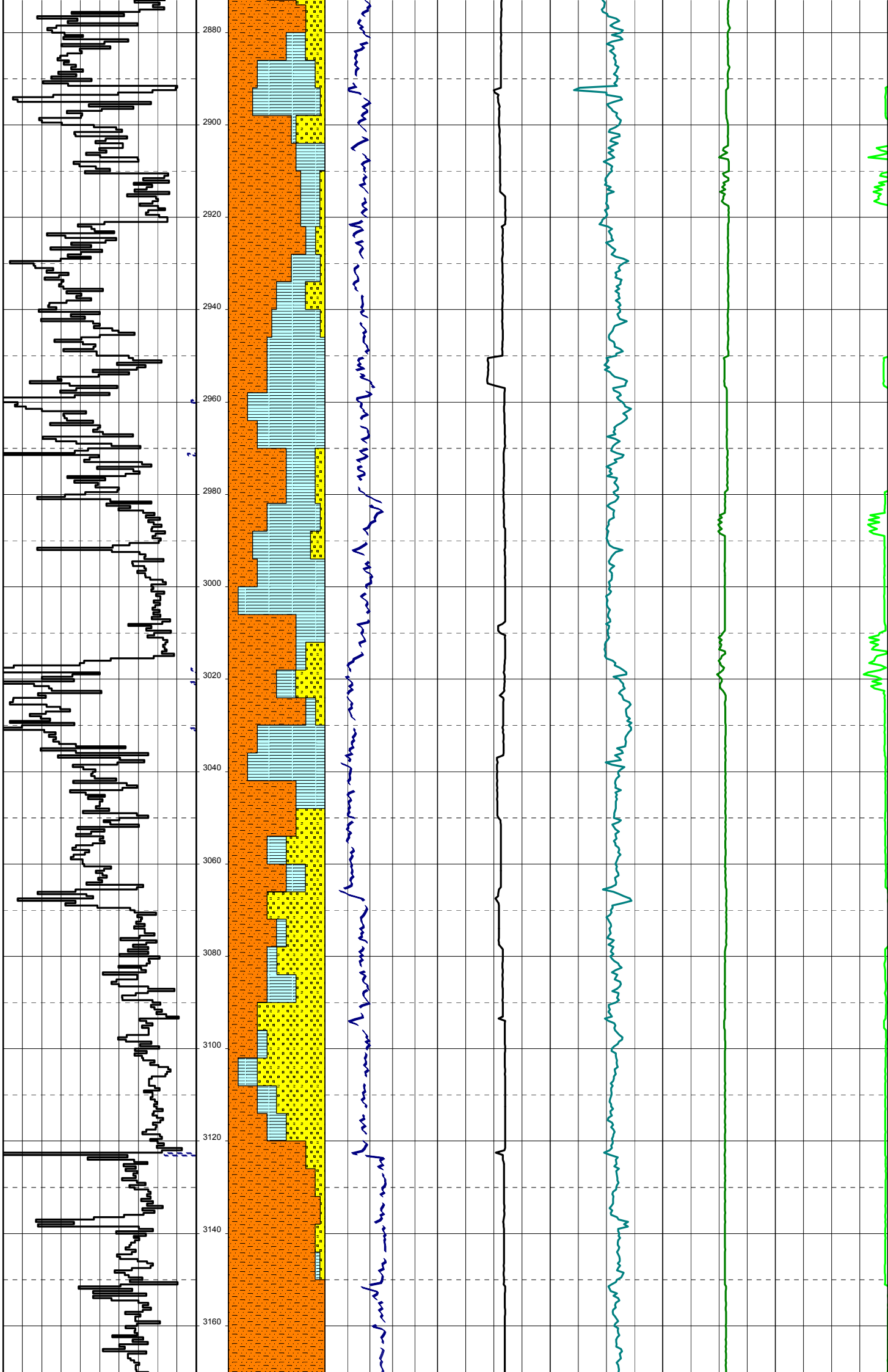
Bit #: SMITH M716PXC
SIZE:241mm (9.5")
JETS:5x18 & 2x16
MD IN:1930m OUT:m
TVD IN:m OUT: m
RUN:m HRS:
COND:





25-07-06





26-07-06

